

Electronic DINO XCAVATOR



The skeleton of an extinct T. rex has been discovered! Now it's up to you to carefully remove each bone from the dig site. Draw a card, answer the question correctly and use the excavation tool...but be very careful! Don't touch the sides of the pit, or the T. rex will roar back to life. Collect the most bones and win!

Contents:

- 1 Electronic Xcavation site
- 1 Xcavation tool (attached to Xcavation site)
- 11 T. rex bones
- 1 Dinosaur egg
- 12 Bone Xcavation cards
- 36 dinosaur trivia cards

PARENTS: To install batteries:

Using a Phillips head screwdriver, remove the battery cover. Insert 2 AA/LR6 batteries as indicated in the battery compartment and replace cover.

Bone Placement: Place all bones and the egg in the appropriate pits, as shown below.

Bone Xcavation cards: Shuffle and place the 12 Bone Xcavation cards facedown in a pile next to the Xcavation site.

How to Play (2-4 Players)

Begin by choosing a player to go first (player 1). Another player takes a Bone Xcavation card from the top of the deck and reads the question out loud to player 1.

If player 1 answers the Dino Trivia question incorrectly, the card goes to the bottom of the deck and it is now player 2's turn.

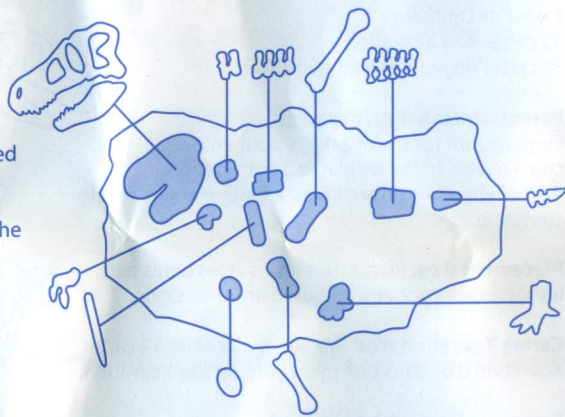
If player 1 answers the question correctly, he/she can attempt to excavate the bone/egg shown on the card. He/she then grasps the Xcavation tool and attempts to remove that bone from the Xcavation site without touching the sides of the bone pit. If successful, player 1 keeps the bone and places

it in his/her bone pile. If he/she fails and the mighty T. rex roars, the bone goes back into the pit and it's player 2's turn.

Play continues until all of the T. rex bones and the egg have been successfully removed from the Xcavation site. The player who successfully removes the most from the Xcavation site is the winner!

How To Play (1 Player)

Challenge yourself to successfully remove each bone and egg from the Xcavation site. Time yourself and try and beat your best time!



IMPORTANT: KEEP THESE INSTRUCTIONS. DO NOT DISCARD.

- Non-rechargeable batteries are not to be recharged.
- Rechargeable batteries are to be removed from the toy before being charged.
- Rechargeable batteries are only to be charged under adult supervision.
- Different types of batteries or new and used batteries are not to be mixed.
- Batteries are to be inserted with the correct polarity.
- Exhausted batteries are to be removed from the toy.
- The supply terminals are not to be short-circuited.
- Do not mix old and new batteries.
- Do not mix alkaline, standard (carbon-zinc) or rechargeable nickel-cadmium batteries.
- Do not dispose of batteries in fire. Battery may explode or leak.

Uncle
Milton
Explore It!

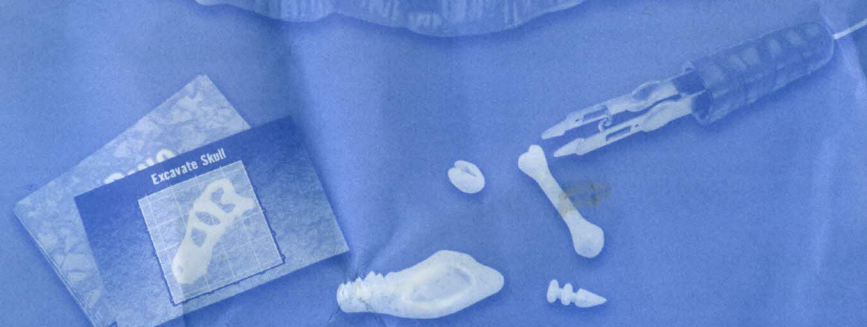
Instruction Guide



⚠️ **WAARSCHUWING:**
VERSTIKKINGSGEVAAR - Kleine onderdelen. Niet voor kinderen jonger dan 3 jaar.

⚠️ **AVERTISSEMENT:**
DANGER DE SUFFOCATION - Petites pièces. Ne convient pas aux enfants de moins de 3 ans.

⚠️ **WARNING:**
CHOKING HAZARD - Small parts. Not for children under 3 yrs.



Electronic
DINO
XCAVATOR

Uncle
Milton

UMI, Inc. Westlake Village, CA 91362
www.unclemilton.com
© UMI. All rights reserved. Dino Xcavator is a trademark of UMI.
PRINTED IN CHINA.

1516-0150-0612-V02

5+
1516

